

Parque Curiá: A landscape design proposal for ambiental education.

Daniele Lira
UFPI

Elid Frota
UFPI

Emmanuelle de Alencar Araripe
UFPI

Isabela Nunes Pires
UFPI

Pedro Vitor Aquino
UFPI

Karenina Matos
UFPI

Abstract

Green areas are important to the environmental quality of the cities, since they maintain a balance between the modified space for urban settlement and the environment. The Parque Curiá project is a landscaping proposal that comprehends a mega Environmental Education Center, developed for an area of possible removal of the Senador Petrônio Portela Airport, in Teresina (PI), causing an inversion of ownership. The park's concept honors the old airport and presents connection as a vital need for human beings, both with their neighbors, as with other living beings, objects, space and time. "Curiá" is a typical northeastern Brazilian expression that means "to search with curiosity", assuming it is important for the connection with the world to be perceptive, therefore, sensitive.

To materialize the park, a few constructive elements were considered to incorporate aerodynamic, organic and geodetic shapes. They correspond to the concrete walkways connecting all segments of the park, with buildings of a constructive typology that can include prefabricated concrete pieces, metallic structures, concrete blocks, exposed ceramic bricks, and glass frames; metallic pavilions; ludic sculptures (metallic or made of PVC); paving in interlocking concrete blocks; trails, dog park, playground, wind farm, vegetable garden, orchard and electric tram linear to the park. All combined with its vegetable composition. Through analyzes of the surrounding area, interventions are proposed, including proposals for relocation of residents at risk to new housing areas close to the land, in addition to creating new roads and revitalizing existing ones.

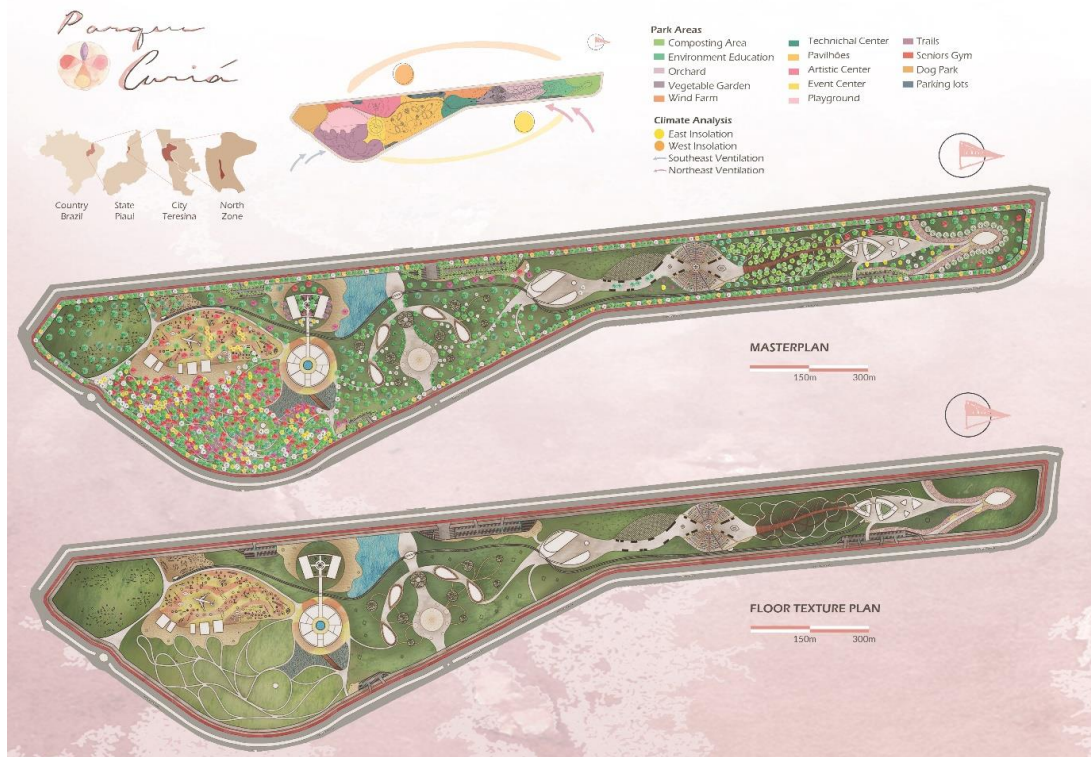


Figure 1. Landscape design plans and analysis. Author's Collection.

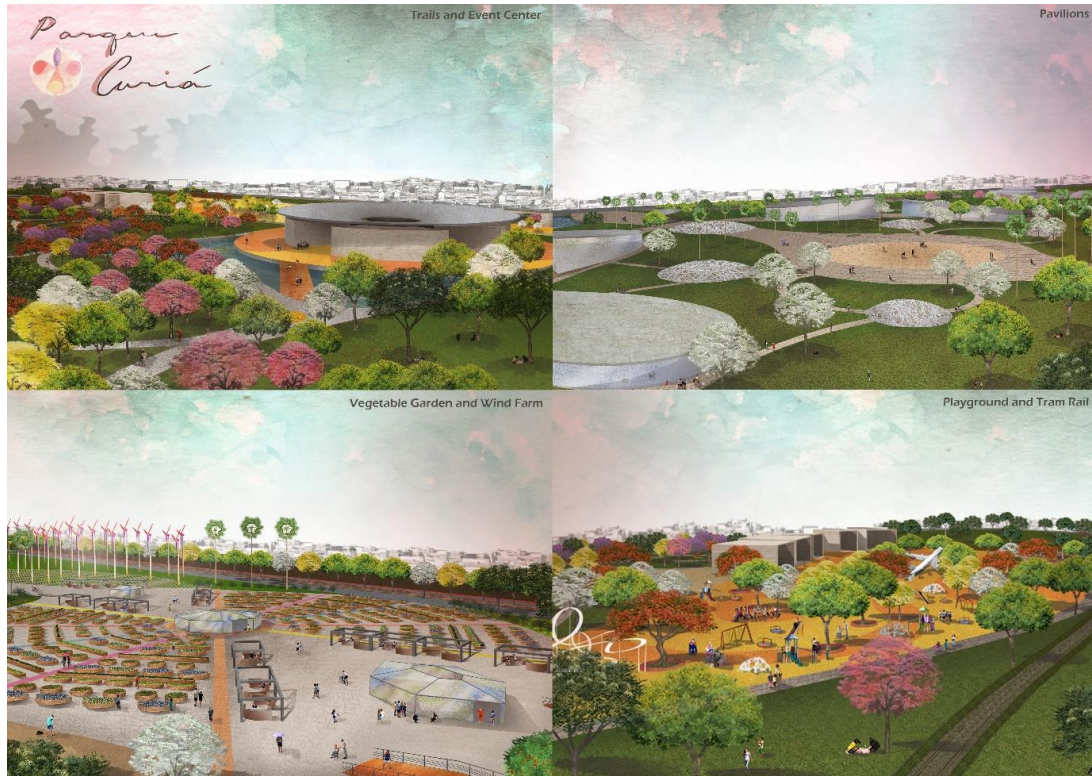


Figure 2. Perspective Views. Author's Collection.

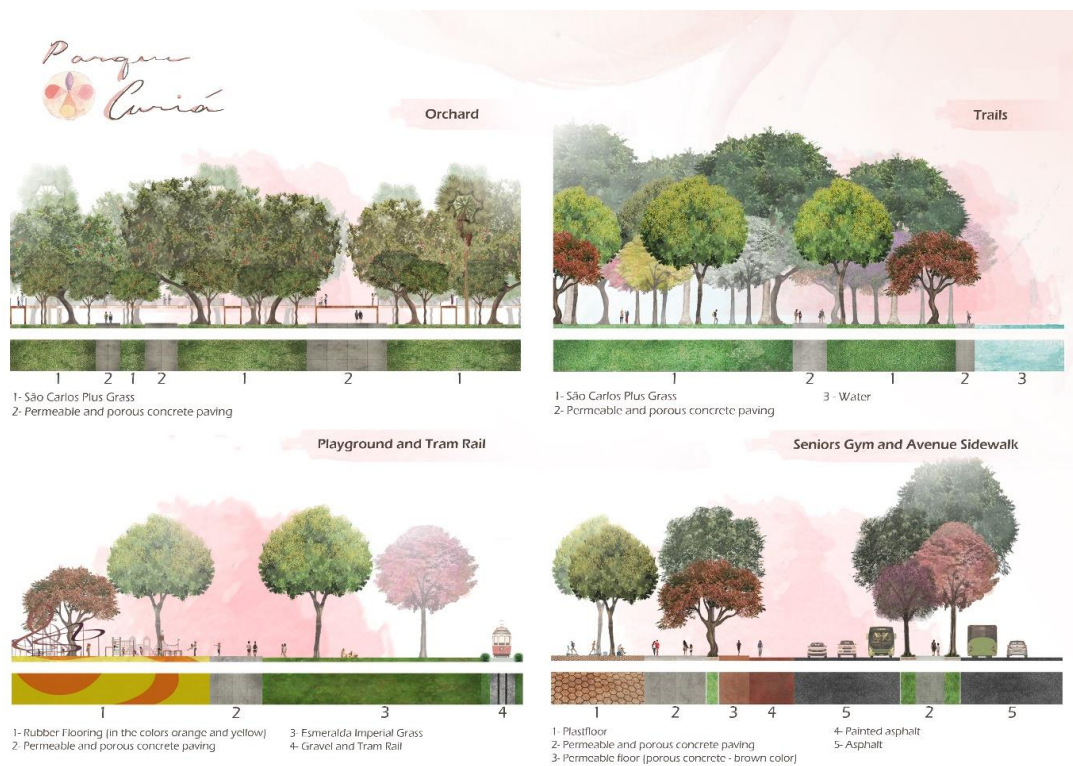


Figure 3. Humanized Sections. Author's Collection.